

HOW TO (PC) Install & Connect to VDI

System Requirements

- An active VPN connection (if off campus)

Download the installer

Navigate to <http://tinyurl.com/isu-vdi>.

Click the **Go to Downloads** link next to VMware Horizon Client for Windows making sure to choose the appropriate link based on your installed architecture of Windows (32 or 64-bit).

Home / VMware Horizon Clients

Download VMware Horizon Clients

Select Version: VMware Horizon Clients for Windows, Mac, iOS, Linux, and Android allow you to connect to your VMware Horizon virtual desktop from your device of choice giving you on-the-go access from any location.

3.0

[Read More](#)

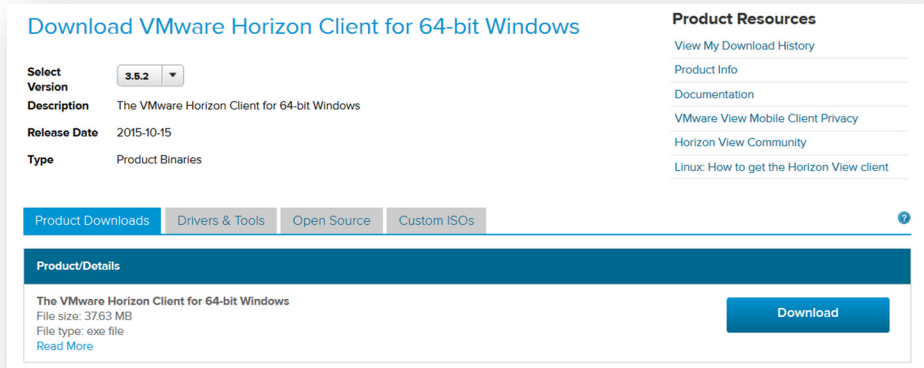
Product Resources

- [View My Download History](#)
- [Product Info](#)
- [Documentation](#)
- [VMware View Mobile Client Privacy](#)
- [Horizon View Community](#)
- [Linux: How to get the Horizon View client](#)

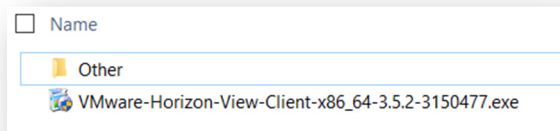
Product Downloads Drivers & Tools Open Source Custom ISOs

Product	Release Date
VMware Horizon Client for Windows	
VMware Horizon Client for 32-bit Windows	2015-10-15 Go to Downloads
VMware Horizon Client for 64-bit Windows	2015-10-15 Go to Downloads

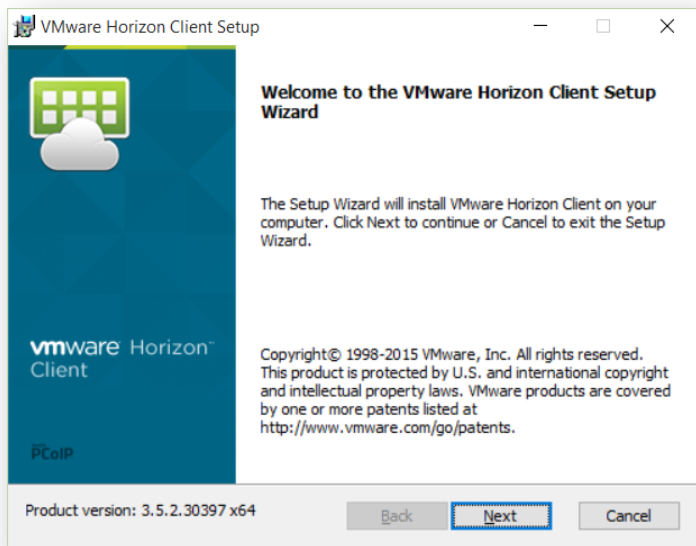
Click the **Download** button to proceed.



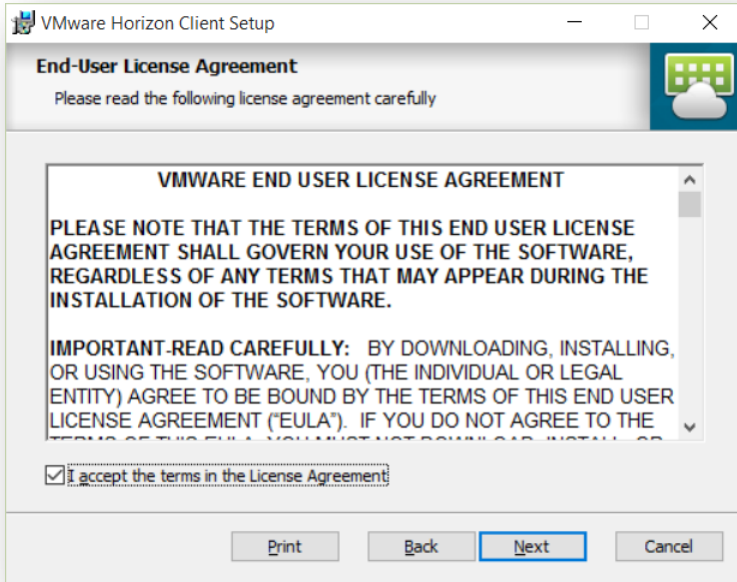
Locate the downloaded file and double-click the exe start the install process.



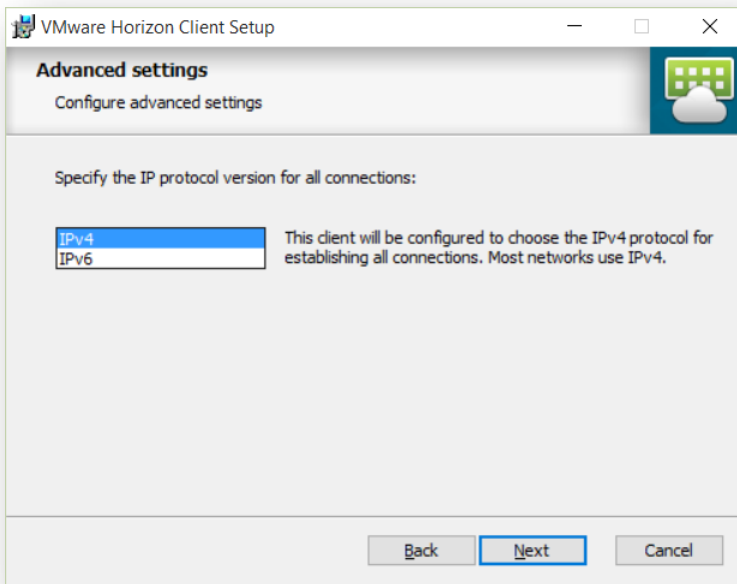
Click the **Next** button to proceed.



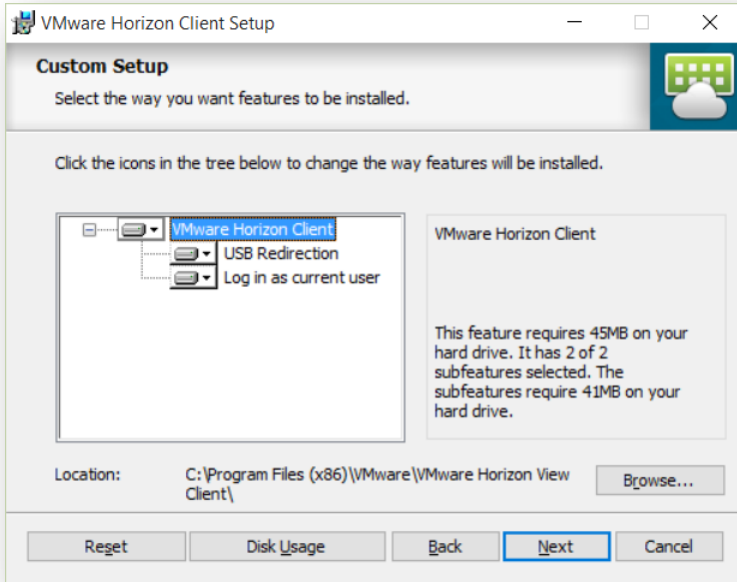
Check the **I accept the terms in the License Agreement** checkbox then click the **Next** button to proceed.



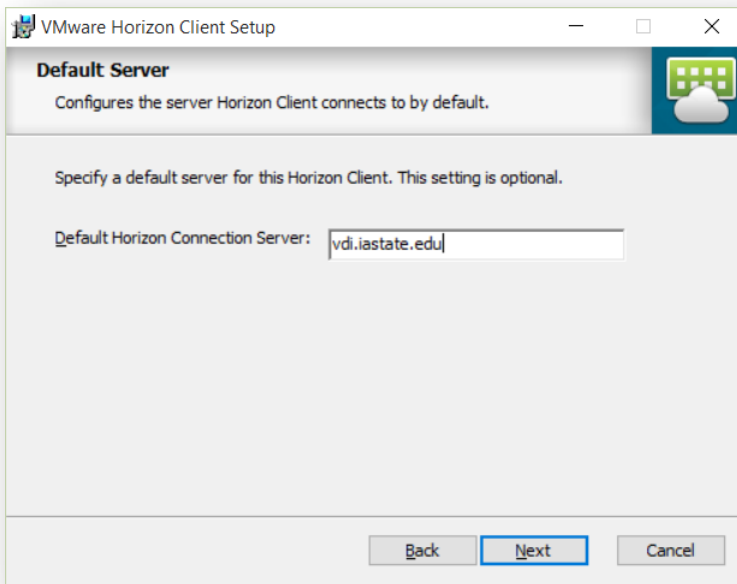
Select **IPv4** in the select box then click the **Next** button to proceed.



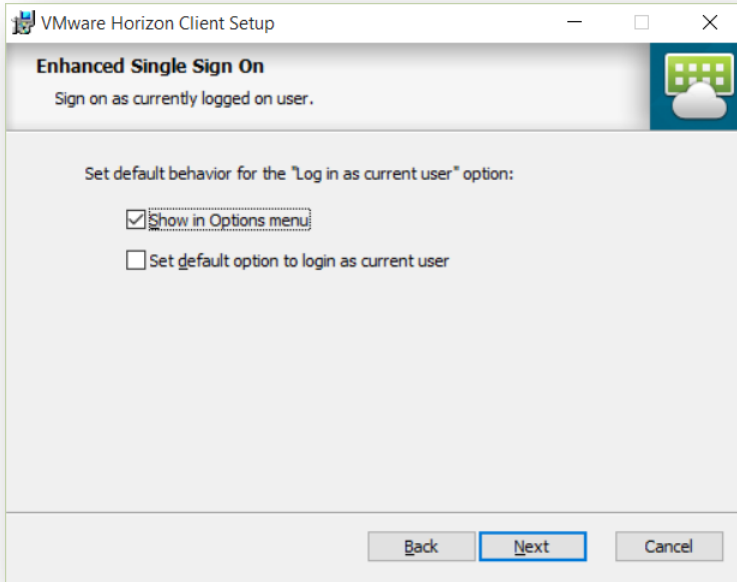
Click the **Next** button to proceed.



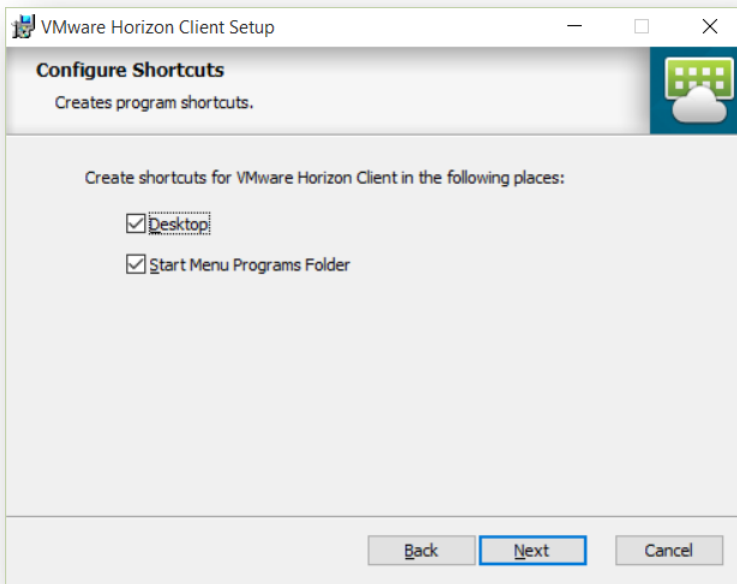
Enter **vdi.iastate.edu** into the **Default Horizon Connection Server** text field then click the **Next** button to proceed.



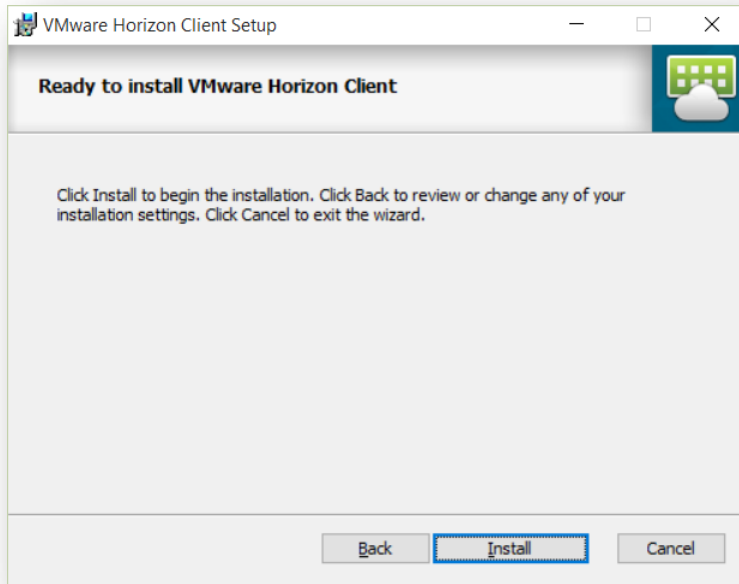
Click the **Next** button to proceed.



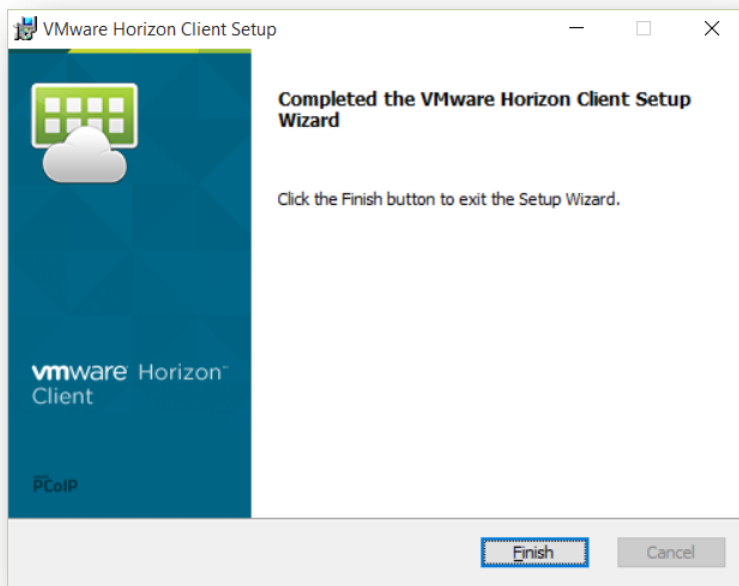
Click the **Next** button to proceed.



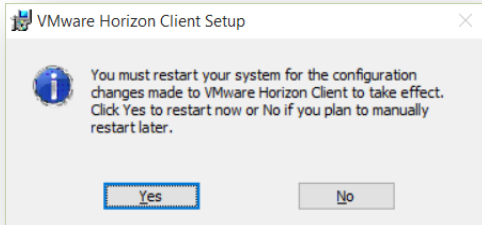
Click the **Install** button to proceed.



Click the **Finish** button to proceed.

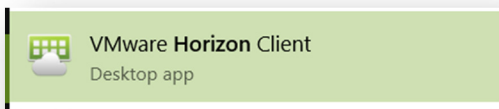


Click the **Yes** button to restart your computer and finish installation.

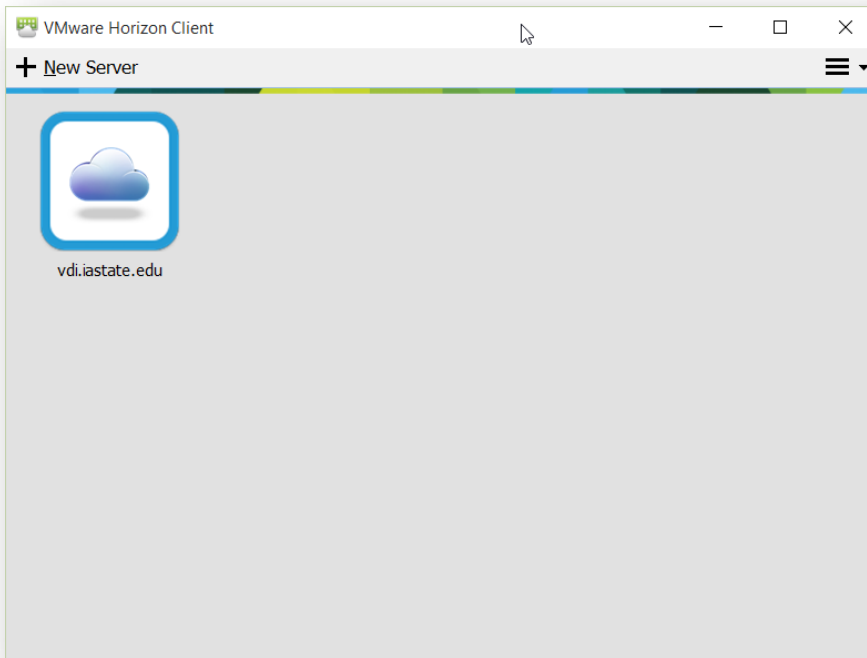


Connect to VDI

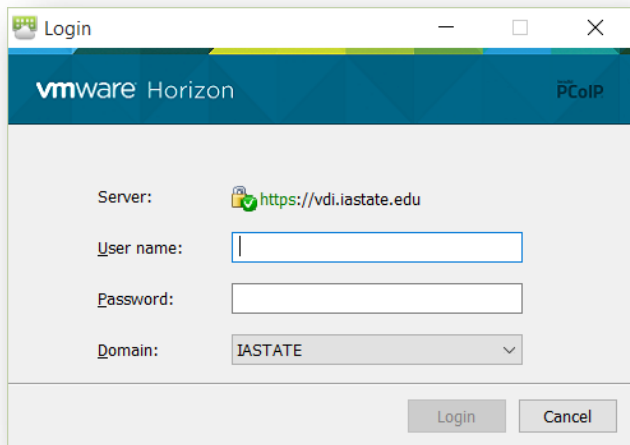
Locate and launch the **VMware Horizon Client** application to proceed.



Double-click the icon labeled **vdi.iastate.edu** to proceed.



Enter your ISU Net-ID and password in the **Username** and **Password** fields then click the **Login** button to proceed.



The screenshot shows a 'Login' dialog box with a VMware Horizon header. The 'Server' field is populated with 'https://vdi.iastate.edu'. The 'User name' and 'Password' fields are empty text boxes. The 'Domain' dropdown menu is set to 'IASTATE'. At the bottom, there are 'Login' and 'Cancel' buttons.

Double-click the **Engineering Student** icon to connect to a VDI session.

