

HOW TO Install & Connect to Solstice Pod

Install App

iOS: <https://itunes.apple.com/us/app/solstice-v2/id887643816?mt=8>



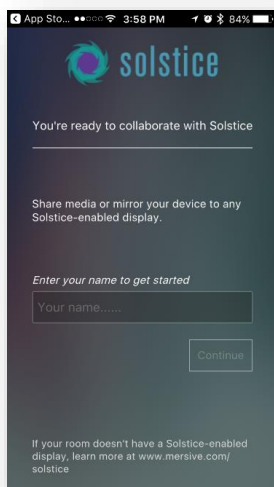
Android: https://play.google.com/store/apps/details?id=com.mersive.solstice.client_v2



Connect to Solstice

Locate the Solstice Client and open the app.

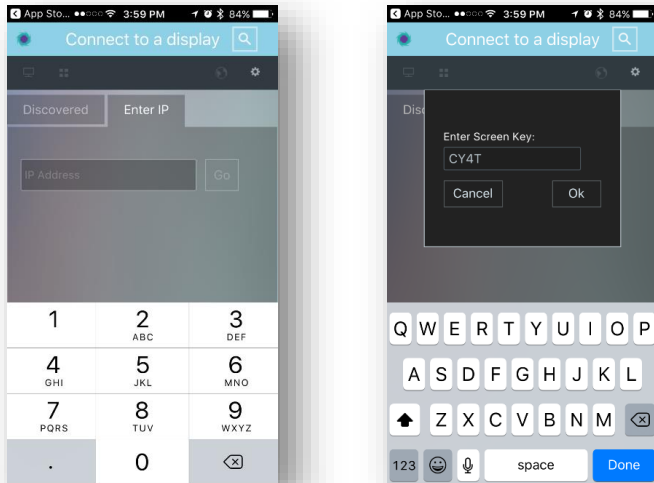
In the Solstice application, enter the **name** you want to be displayed for yourself and tap the Continue button.



Enter the **IP address** located in the lower left of the display you are connecting to and tap the **Go** button.

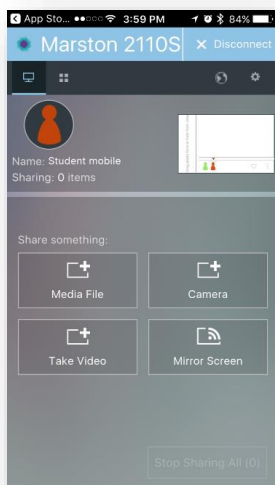
Enter the **Screen Key** that is shown on the display you are connecting to and tap the **OK** button.

Note:, Multiple people can connect to the same display using the same IP address and Key.

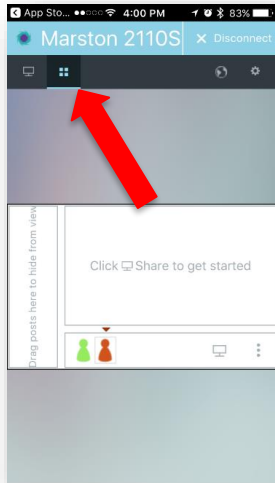


Now that you are connected, you can mirror your screen, display a photo, video or file.

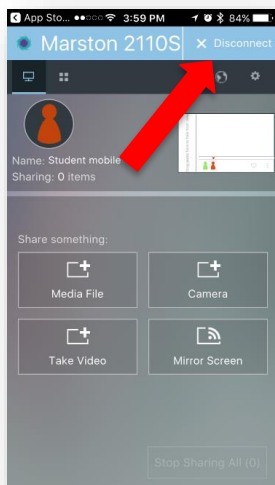
Note: For iOS screen mirroring, visit the end of this document for further instructions.



To manipulate what is shown on the connected display, tap the Window Control icon in the upper left hand corner.



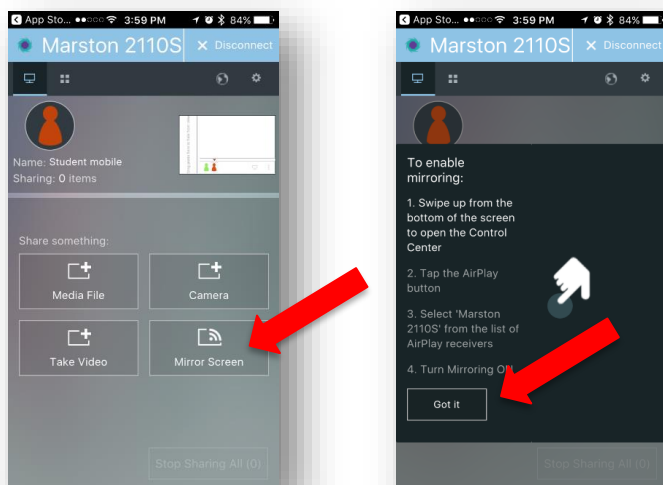
When finished, disconnect from the Solstice by tapping the **Disconnect** button. It is important that you disconnect when you are complete and not just quit the application.



iOS Screen Mirroring

To mirror the screen on iOS, tap **Mirror Screen** in the Solstice app.

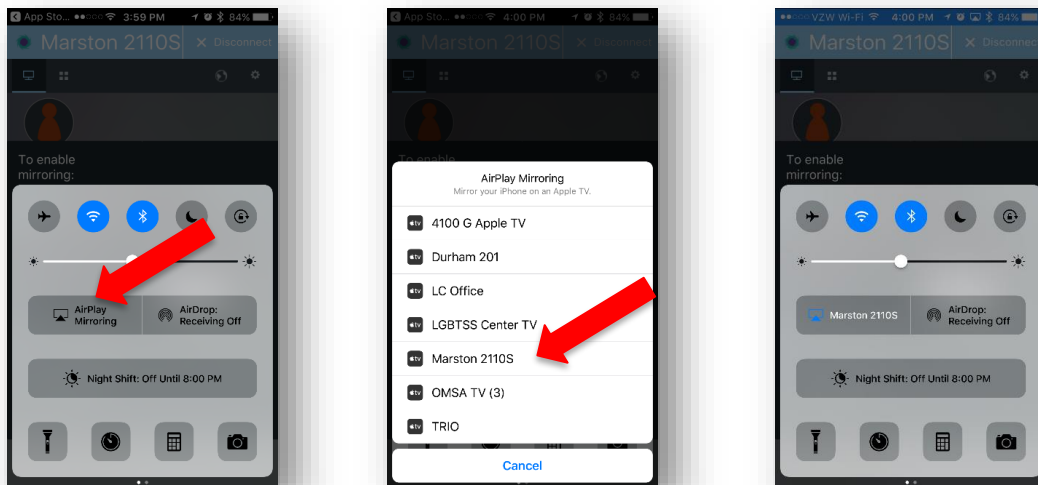
Click the **Got It** button.



Swipe up from the bottom of your phone to get to Control Center.

Tap the **Airplay Mirroring** button.

Select the name of the Solstice you are connecting to and your phone will be displayed on the screen.



To end AirPlay Mirroring, open Control Center and select the Solstice you are connected to.

Tap **Turn Off AirPlay Mirroring**.

