

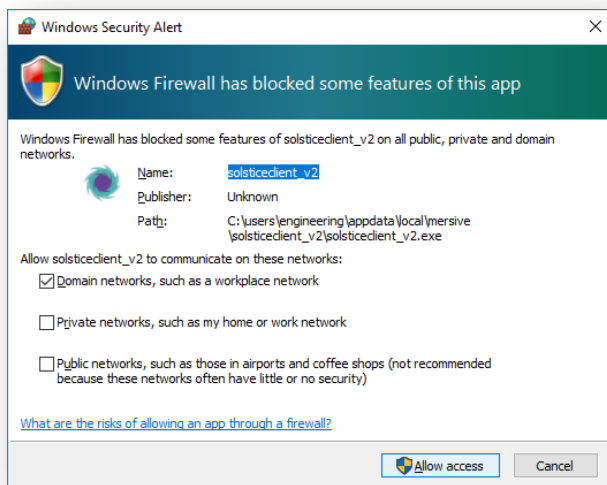
HOW TO Install & Connect to Solstice Pod

Download Solstice Client

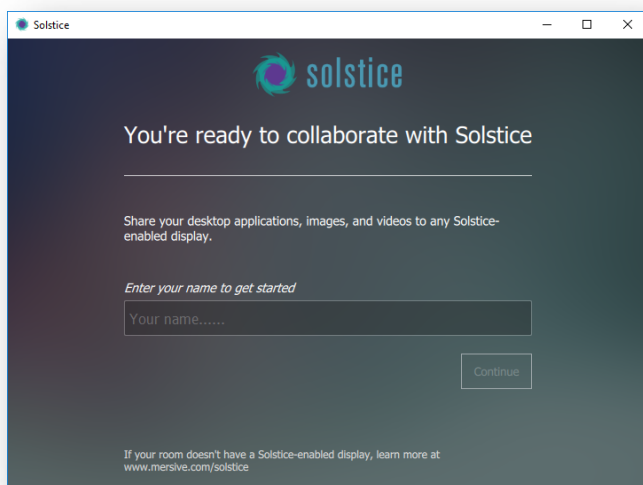
Navigate to <https://www.mersive.com/download/>

Locate Solstice Client installer you downloaded (**SolsticeClientWin.exe**) and double-click the exe to run the installer.

Click **Allow access** to finish install (Windows).



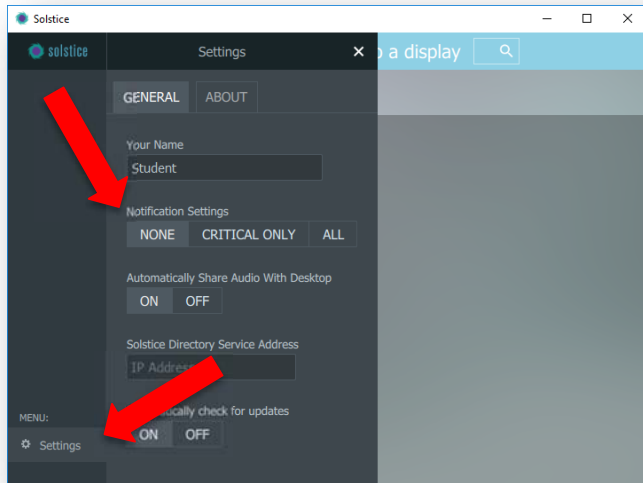
In the Solstice application, enter the **name** you want to be displayed.



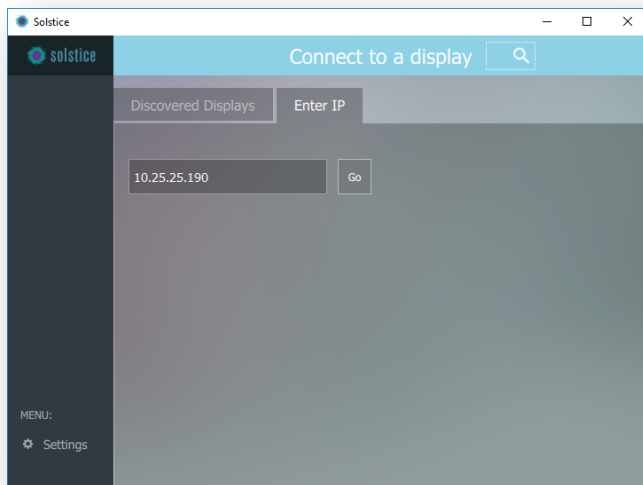
Click **Settings** in the lower left corner.

Make sure Notifications Settings is set to **NONE**.

Note: This stops a notification from popping up every fifteen minutes warning that your PC is currently displaying

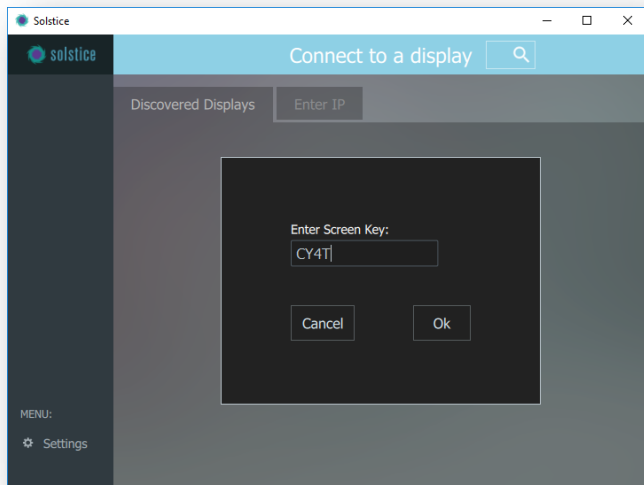


Enter the **IP address** located in the lower left of the display you are trying to connect to and click **Go**.

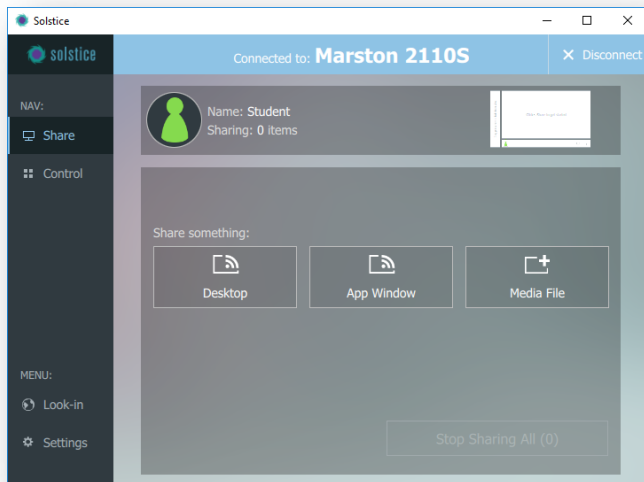


Enter the **Screen Key** that is shown on the display and click **OK**.

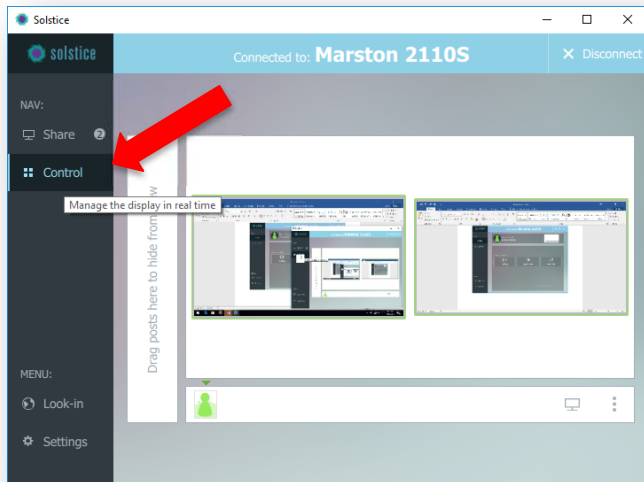
Note: Using the same IP address and Key, multiple people can connect to the same display.



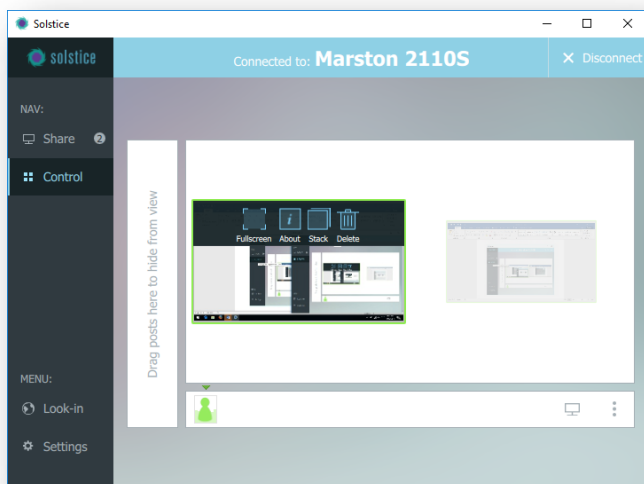
Now that you are connected, you can share your desktop, a specific application, or a files located on your computer.



By clicking **Control**, you can manipulate what is shown on the display.



Right-clicking a window will give you extra options to display fullscreen, information about the window, stack and delete.



When finished, disconnect from the Solstice by clicking **Disconnect**.

